

# LED..I150-3.. Low-Angle LED Ring Lights (150 mm)



## Datasheet

Non-Diffused Lighting for Increased Close-Up Contrast



- 150 mm LED ring light for low-angle illumination
- Uses 3 tiers of LEDs mounted at 75° to the optical axis
- Low-angle light enhances contrast of surface defects, etching, and embossed marks
- Well suited for dot-peened or pin-stamped data matrix marks
- Solid-state LED light source
- Continuous or strobed operation is selectable via sensor software
- The suggested field of view is 80 mm in diameter and the suggested stand off is 12.5 mm



**Important:** Lea el siguiente instructivo antes de operar el luminario. Por favor descargue desde [www.bannerengineering.com](http://www.bannerengineering.com) toda la documentación técnica de los LED..I150-3.. Low-Angle LED Ring Light, disponibles en múltiples idiomas, para detalles del uso adecuado, aplicaciones, advertencias, y las instrucciones de instalación de estos dispositivos.

## Models

Model <sup>1</sup>	Illumination	Color	Cable/Connector	Supply Voltage and Current
LEDRI150-3W	High-intensity, low-angle light	Visible red, 640 nm	3-conductor, 2 m (6.5 ft) attached cable with flying leads (see wiring table)	24V DC ±10% at 500 mA maximum
LEDII150-3W		Infrared, 880 nm		24V DC ±10% at 350 mA maximum
LEDRI150-3M		Visible red, 640 nm	2 m (6.5 ft) cable with 3-pin, 8 mm male Pico-style connector (direct connection to <i>PresencePLUS</i> P4)	24V DC ±10% at 500 mA maximum Voltage supplied by <i>PresencePLUS</i> sensor, if operating at 24V DC (see sensor manual).
LEDII150-3M		Infrared, 880 nm		24V DC ±10% at 350 mA maximum Voltage supplied by <i>PresencePLUS</i> sensor, if operating at 24V DC (see sensor manual).

## Wiring Table

LED..I150-3.. Wire	<i>PresencePLUS Pro</i> Controller Terminal Block	External Power Supply (Strobed)	External Power Supply (Continuous)
Brown	Pin 1, + V (24 V DC ±10%)	+ V	+ V
Blue	Pin 2, - V (DC common)	- V	- V
Black	Pin 4 (strobe)	+5 V DC OFF - V ON	- V

## Specifications

See the electrical characteristics on the product label.

### Construction

Black anodized aluminum housing with ¼ - 20 threaded mounting holes

### Useful Life

When operated within specification, output will decrease less than 20% after 20,000 hours and less than 30% after 30,000 hours.



**Note:** Actual useful life of strobed lights depends on duty cycle.

### Environmental Rating

IEC IP0; NEMA 0

### Operating Conditions

0 °C to +50 °C (+32 °F to +122 °F)  
90% at +50 °C maximum relative humidity (non-condensing)

### Certifications

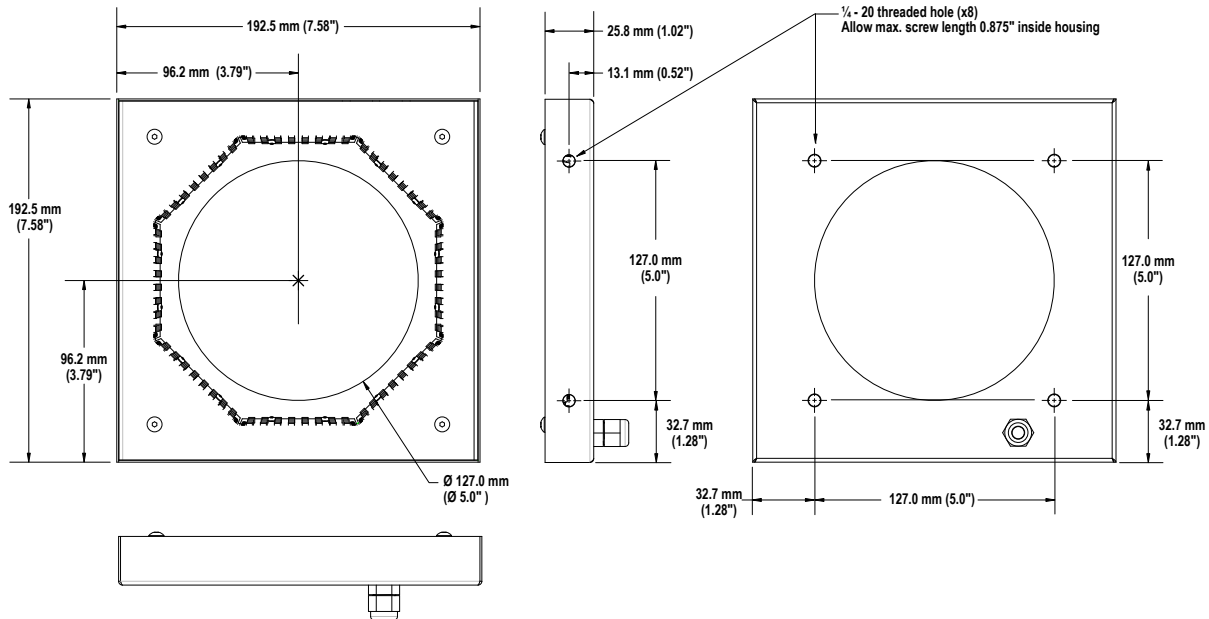


<sup>1</sup> To order the 9 m (30 ft) PVC cable model, add the suffix "W/30" to the cabled model number. For example, LEDRI150-3W W30.



## Dimensions

All measurements are listed in millimeters [inches], unless noted otherwise.



## Cleaning Instructions

Regularly remove any dust and dirt from the light source. Blow off dust using anti-static compressed air.

## Banner Engineering Corp. Limited Warranty

Banner Engineering Corp. warrants its products to be free from defects in material and workmanship for one year following the date of shipment. Banner Engineering Corp. will repair or replace, free of charge, any product of its manufacture which, at the time it is returned to the factory, is found to have been defective during the warranty period. This warranty does not cover damage or liability for misuse, abuse, or the improper application or installation of the Banner product.

**THIS LIMITED WARRANTY IS EXCLUSIVE AND IN LIEU OF ALL OTHER WARRANTIES WHETHER EXPRESS OR IMPLIED (INCLUDING, WITHOUT LIMITATION, ANY WARRANTY OF MERCHANTABILITY OR FITNESS FOR A PARTICULAR PURPOSE), AND WHETHER ARISING UNDER COURSE OF PERFORMANCE, COURSE OF DEALING OR TRADE USAGE.**

This Warranty is exclusive and limited to repair or, at the discretion of Banner Engineering Corp., replacement. **IN NO EVENT SHALL BANNER ENGINEERING CORP. BE LIABLE TO BUYER OR ANY OTHER PERSON OR ENTITY FOR ANY EXTRA COSTS, EXPENSES, LOSSES, LOSS OF PROFITS, OR ANY INCIDENTAL, CONSEQUENTIAL OR SPECIAL DAMAGES RESULTING FROM ANY PRODUCT DEFECT OR FROM THE USE OR INABILITY TO USE THE PRODUCT, WHETHER ARISING IN CONTRACT OR WARRANTY, STATUTE, TORT, STRICT LIABILITY, NEGLIGENCE, OR OTHERWISE.**

Banner Engineering Corp. reserves the right to change, modify or improve the design of the product without assuming any obligations or liabilities relating to any product previously manufactured by Banner Engineering Corp. Any misuse, abuse, or improper application or installation of this product or use of the product for personal protection applications when the product is identified as not intended for such purposes will void the product warranty. Any modifications to this product without prior express approval by Banner Engineering Corp will void the product warranties. All specifications published in this document are subject to change. Banner reserves the right to modify product specifications or update documentation at any time. Specifications and product information in English supersede that which is provided in any other language. For the most recent version of any documentation, refer to: [www.bannerengineering.com](http://www.bannerengineering.com).

For patent information, see [www.bannerengineering.com/patents](http://www.bannerengineering.com/patents).

## Mexican Importer

Banner Engineering de México, S. de R.L. de C.V.  
David Alfaro Siqueiros 103 Piso 2 Valle oriente  
San Pedro Garza García Nuevo León, C. P. 66269  
81 8363.2714